



### Take care and be aware



**If you're going to be out and about on the roads this Spring and Summer please ensure you wear reflective clothing and you're aware of the equine highway code. Before you take a horse on the road, you should:**

- Ensure all of your tack fits well and is well maintained
- Make sure you can control the horse you are riding. Try to ride with other horses who are less nervous if you think that your horse will be worried in traffic or at least have assistance
- Never ride a horse without both a saddle and bridle

**Before riding off or turning, look behind you to make sure it is safe, then give a clear arm signal. When riding on the road, you should:**

- Keep to the left with both hands on the reins unless you are signalling
- Keep both feet in the stirrups
- Not carry another person
- Not carry anything which might affect your balance or get tangled up with reins

Hi Everyone

As I write this I am very much looking forward to the clocks springing forward! I have to say that horses and Winter are challenging at the best of times, but the last few months really have been ghastly!

Paddy and Henry are doing well. Henry and I have come on leaps and bounds with our jumping thanks to the fantastic tuition from Paul Sims and the support from everyone at Heath House Sport Horses.

I have to say that when I made the decision to buy another horse, I was really dreading it. There are so many people who sell horses that are not as they describe, and finding Paddy took so long.

Paul Sims and Hannah Bate were just fantastic. They understood what I was looking for, and set to work. I was charged a fair price for the most amazing horse that is Henry, and I would honestly recommend these people to anyone that is seriously looking to purchase an animal - whether it be for hacking or top competitions.

It is not just the sale of the horse and finding the right one that is important to them. They genuinely care in how you are getting on with the horse.

They have fantastic facilities to try a horse and are based just outside Nantwich in Cheshire. Please contact me if you would like their contact details.

Nikki Murrell has left the business due to family commitments and is now firmly placed in a role that will give her all the school holidays off! We will miss her here and wish her all the very best in her new role.

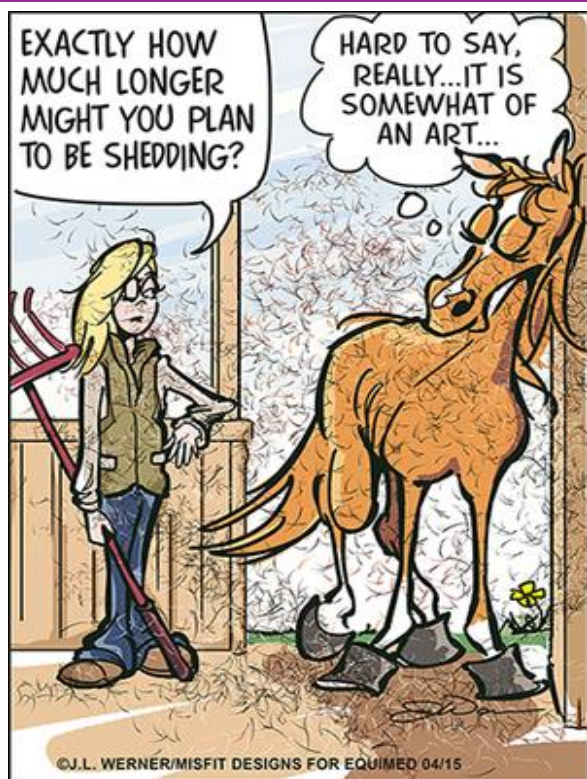
Debbie Sebire, as always, has been excellent in organising our Guernsey lists - thank you Debbie for feeding and watering us whilst on our visits, and making sure we are driven around your beautiful island from client to client.

The event season has just started, and may I take this opportunity of wishing all the event riders a very successful and safe season.

The countdown to outdoor jumping has started which I am very excited about. I always feel 'very important' when I jump at Field House, going down the hill in to that stunning arena! It's the little things lol!!

Best Wishes

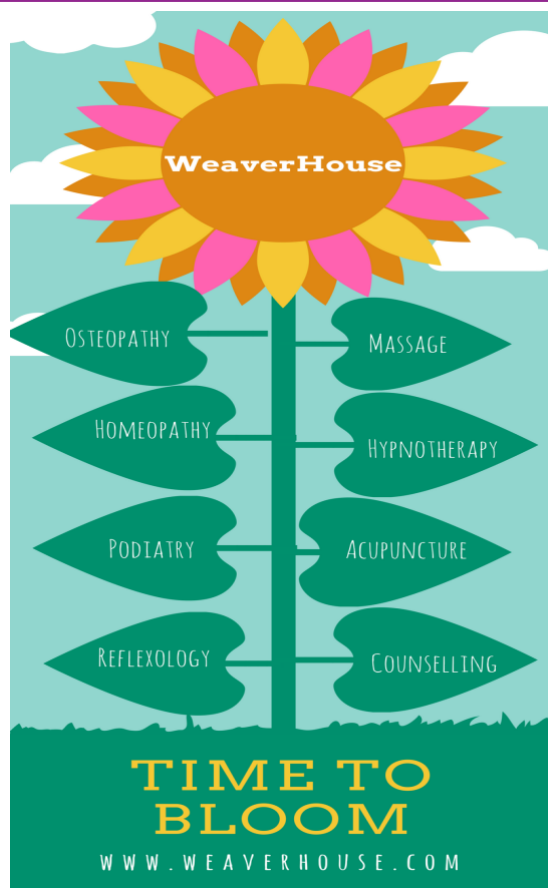
Andrew



A sure sign of spring around the stables and on your clothes is horsehair—and lots of it. By now your horses are probably actively shedding, a process which often starts in December and increases along with the daylight hours. Some horses hang on to their coats longer than others, but an individual's shedding "pattern" will typically be the same from year to year. If your horse isn't shedding the same or is holding on to his coat longer it may be indicative of a problem and therefore worth seeking advice from your vet.

#### **Remember to...Check Fences, Gates, Fields, Water Troughs**

If your horses have been stabled through the winter and will now be turned out, check your fields for hazards such as holes, debris, or low tree branches. Clean water troughs and check for sharp edges. Carefully check gates and fences for loose or broken parts and repair any defects before letting your horses into the field.



It's time to shake off the Winter blues and say hi to Spring! We have a wide range of human treatments available at WeaverHouse that will soon have you in full bloom again. Give us a call to find out more and if you're new to the practice we'll even give you a **FREE 15 min** Osteopathic back and health assessment check

## **01270 629933**

Equine back pain just like human back pain is not uncommon and horses are often referred to WeaverHouse for assessment and treatment. There are a multitude of reasons as to why a horse may experience back pain and likewise a variety of presenting signs and symptoms.

Legislation requires that Equine Osteopaths work with your vet's referral so we will always ask for your vet's consent prior to any examination or treatment taking place.

If you would like to make an osteopathic appointment for one of our team (Adam, Gareth or Grace) to treat your horse please give us a call and speak to Erin our Equine coordinator who will be happy to help.